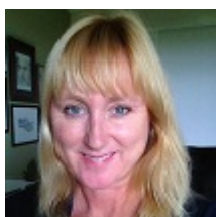


Congratulations – ARC success in non-CSU led project



Congratulations to Dr Donnah Anderson, School of Psychology and colleagues from Southern Cross University who have been successful in their ARC project - "Beyond safety: Ethical practice involving children".

[Back to top](#)

Pitch It Clever

The annual [Pitch it Clever competition](#) has been launched. This competition challenges early to mid-career researchers to talk up their research in a 1-2 minute video. The video should aim to persuade leaders from across the country to become champions for the research.

Three prizes are up for grabs:

- The Vice-Chancellors' Award
- The Delegates' Choice Award
- The People's Choice Award

Videos will be shortlisted by a panel of Vice-Chancellors and then shown at [Universities Australia's annual Higher Education Conference](#), where conference delegates will vote for the Delegates' Choice Award. The winner of the shortlisting process will receive the Vice-Chancellors' Award, and members of the Thinkable community will vote to decide the winner of the People's Choice Award.

If you are interested in competing, please send an Expression of Interest to [Kerry Madden](#) by **21 December 2017**.

[Back to top](#)

Professional Development Opportunities

- **Professional Development Survey**

- ? Research leadership ...
- ? Industry engagement ...
- ? IP and commercialisation ...

What topics would you like to see on the 2018 Calendar? The Research Office is undertaking a survey of research staff at CSU to assess its professional development programs. It should take less than 10 minutes to complete, and will ask about your experience with the programs and your interests in further research training. Your input will help us to improve the Professional Development Calendar for all staff involved in research. Have your say! You can access the survey now:

https://www.research.net/r/RO_PDsurvey

[Back to top](#)

- **The 2018 Calendar**

The new calendar should be published in late December. This is the link to keep an eye on - PD Calendar for 2018 <http://www.csu.edu.au/research/professional-development/program-calendar>

[Back to top](#)

QCU

The Quantitative Consulting Unit (QCU) provides statistical assistance to CSU's research students. Some of the services the QCU can provide are:

- General statistical consultancy
- Statistical Analysis
- Statistical Modelling
- Mathematical Modelling
- Computer Modelling/Simulation & Computational Mathematics
- Operations Research
 - Data Mining
- Complex Systems/Artificial Intelligence
- Signal Processing
- Software Development
- Workshops for people looking to enhance their statistical processing skills.

Through the QCU research Honours, Masters and PhD students are offered a free initial consultation to provide a kick-start to their research to ensure that they embark on a path that will lead to successful completion of their research. Preparation and design of your research project is paramount to your success in conjunction with our service policy. After 4 months John has settled in well and the QCU is back to running at its full capacity.

[Back to top](#)

What's New at the Library?

Primo search upgrade: what it means for you



On 4th December 2017 Primo Search was upgraded to a new and improved interface!

Before the launch of the new interface there are three things to be aware of:

1. **InterLibrary Loans** You will not be able to submit Inter Library Loan requests from 22 November to 6 December.
2. **My Library Record** From 5pm Friday 24 November to Sunday 3 December you will be unable to log into My Library Record. To place digitization and hold requests during this period please use the Temporary Request Form in Primo Search.
3. **Search History** Your Search History will not migrate to the new Primo Search interface. If you wish to retain a copy of this information, please do so before 24 November. To save your search history follow [these instructions](#).

We'll let you know what to expect from the new interface closer to the launch.

If you have any questions about the upgrade or how to save your information please contact the [Library](#).

Upcoming Library Training

The Library's training sessions have finished for 2017, but keep watching for the 2018 training calendar which is being compiled now. We would like your help, tell us which times you would like to see your training sessions run. Morning, 9.30; afternoons, 2.00pm or evenings, 6.00pm? You can reply by sending an e-mail through to me; Tabitha Merrell tmerrell@csu.edu.au

[Back to top](#)

BJBS in the Media



CSU continues to dominate the postgraduate IT education market

Charles Sturt University (CSU) has further increased its leadership for course enrolments within the university information technology (IT) postgraduate education sector.

Recently released Australian Government [higher education statistics](#)* show that CSU had 2 694 students enrolled in postgraduate computing courses in 2016, which is 86 per cent more enrolments than CSU's nearest competitor.

Dr Arif Khan (pictured), course director in the CSU [School of Computing and Mathematics](#), explained the reasons behind this dominance.

"Technical innovation happens fast, and institutions need to be extremely agile to keep their courses relevant," Dr Khan said.

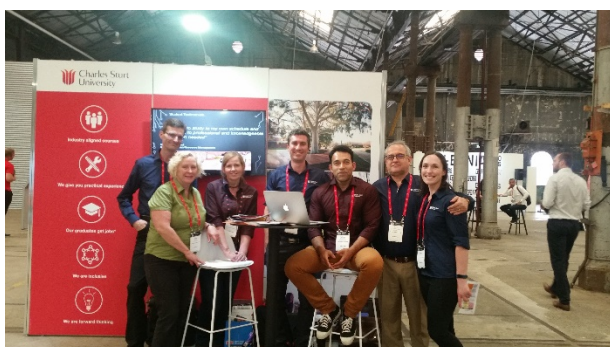
"Charles Sturt University is ahead of the curve in this regard. We work with professionals across different IT specialist areas to align our content with the latest industry developments.

"At the moment, a lot of industry demand is for IT security practitioners. In response, we have developed subjects such as cyberwarfare and terrorism, dark web, and cloud security. Next year, we will release a new master's degree on cyber security."

Read more at <http://news.csu.edu.au/latest-news/it-and-computing/csu-continues-to-dominate-the-postgraduate-it-education-market?ytBmHfYqd1SyqmPC.99>

[Back to top](#)

Understanding Millennials give CSU the edge



Understanding the Millennial generation's desire for a personal experience online is giving Charles Sturt University the edge in the higher education sector in Australia.

Staff from Charles Sturt University's (CSU) School of Management and Marketing represented the only Australian university at the [Millennial 20/20 conference](#) held in Sydney on 14 and 15 November 2017.

"The event allowed, us, as marketing academics to immerse ourselves in current practices of cutting edge industry firms," said CSU lecturer in marketing, Dr Michael Mehmet.

"There was a strong global representation attending from places including Silicon Valley, the UK, as well as Australia. We were exposed to new technologies, apps, software and 'big data' algorithms that will be emerging publicly in the next 12 months."

Previously an annual event held in London, Singapore and New York, the Sydney conference hosted international business and entrepreneurs as they explored trends of millennial perceptions and consumer behaviour on e-commerce.

According to event organisers, the "millennial mindset of personalisation and user-generated content" is quickly becoming the norm and disruption in commerce is transforming the landscape as we know it. "We are investigating how we can implement these practices and insights into our undergraduate and post graduate courses, giving us a competitive edge in the market place and also giving our students a competitive edge in the recruitment market place" Dr Mehmet said.

"The other advantage of being the only education institution represented at the conference was we could ensure Charles Sturt University is front of mind in the marketing industry as a practice-based educator, driving innovation and entrepreneurship.

Read more at <http://news.csu.edu.au/latest-news/business-and-commerce/understanding-millennials-gives-csu-the-edge?HGjIj2glxGOwxlov.99>

[Back to top](#)

Faculty of Business, Justice and Behavioural Sciences (FoBJBS) Human Research Ethics Committee will be RETIRED as of December 2017

From 2018 all Human Research Ethics applications are to be submitted through a single centralised submission point ethics@csu.edu.au

To meet the load the HREC will have two panels that fully meet the requirements of the NHMRC, including adequate administrative support. These panels will effectively be two connected HRECs within CSU. Each panel will meet monthly, but meeting dates will be offset so that one HREC meeting occurs fortnightly. Researchers will submit their applications to the ethics@csu.edu.au email address, and the date of submission will determine which panel reviews each application.

Ongoing management of existing ethics applications that have been approved by Faculty committees will be transitioned to the HREC in January 2018. Reporting requirements will remain the same, however reports should be submitted to ethics@csu.edu.au

For additional information regarding Ethics Process and Meeting schedules please review the HREC website.

For additional information regarding ethics processes and meeting schedules please review the HREC website http://www.csu.edu.au/research/ethics_safety/human

A huge thank you to the outgoing FOBJBS-FHEC Human Research Ethics Committee Presiding Officer and Committee members and alternate members for their time, effort and commitment in managing the Low Risk Human Research Ethics review process.

[Back to top](#)

HDR Candidate news

Update on 2018 HDR Scholarship round

The university received a large number of applications for domestic and international scholarships in the recent round. Applicants will be advised of the outcome by the end of the week commencing 15th December. Good luck to all those who applied.

[Back to top](#)

Attention students submitting on or before March census date



The March census date is a peak time for thesis submission.

Anyone who is intending to submit should ensure that they are familiar with the process and requirements for submission. Please refer to [this link on the CSU student portal](#) for all the relevant information.

Please note that if you are submitting your thesis, then the [Notification of Readiness to Submit & Appointment of Examiners](#) form will need to be completed by your supervisor and sent to the Sub Dean Graduate Studies two months before final submission.

Finally, please note that candidates are **no longer required to print** copies of their thesis for examination, the thesis should be an electronic document **submitted in an electronic format such as PDF**.

For any questions regarding the process please don't hesitate to contact [Hayley Gifford](#).

[Back to Top](#)

Last chance to complete progress reports

A reminder that the current progress reporting round is due to close very soon, if you have not completed this **please do so immediately**. For more information about progress reporting and for the link to the link to My Research please visit the [RO website](#).

[Back to Top](#)

Changes to enrolment process from 201830 onwards



HDR candidates are required to be formally enrolled for two academic sessions per calendar year for each year of their candidature, except where a specified period of Leave of Absence has been approved.

To ensure correct enrolment for 2018, candidates will soon receive an email from the Division of Student Administration (DSA) to advise the subject/s they have been enrolled in for 2018. Candidates will need to

respond either:

- Confirming authorisation of the enrolment
- Proposing an alternate subject
- Advising they will be applying for a session of [leave of absence](#).

Deadlines and further information will be included in the email.

Please ensure your contact details are correct via [Online Administration](#).

[Back to top](#)

Christmas closure

Please note that Charles Sturt University will be closed from 12.30 pm on Friday, 22 December 2017 to Monday, 1 January 2018 (inclusive). There will be no phones or email accounts attended to during this period. Hayley Gifford will be on leave from Friday 22nd December and will return to the office on Monday 8 January and Ramudu Bhanugopan will be away from the office until the end of January but will have intermittent access to email.

Chang-Tsun Li is on leave and will return Monday 8 January. Kerry Madden will be on leave from Friday 22 December to Monday 8 January. Tanveer Zia, acting Associate Dean Research will be available apart from the University closure dates until Monday 8 January.

Wishing you and your families a safe and relaxing festive season.

Tanveer Zia
Acting Associate Dean
(Research)
tzia@csu.edu.au
02 6933 2024

Ramudu Bhanugopan
Sub-Dean (Graduate
Studies)
bramudu@csu.edu.au
02 6933 2696

Hayley Gifford
Graduate Studies Liaison
Officer
hgifford@csu.edu.au
02 6933 4799

Kerry Madden
Research Liaison Officer
kmadden@csu.edu.au
02 6365 7977